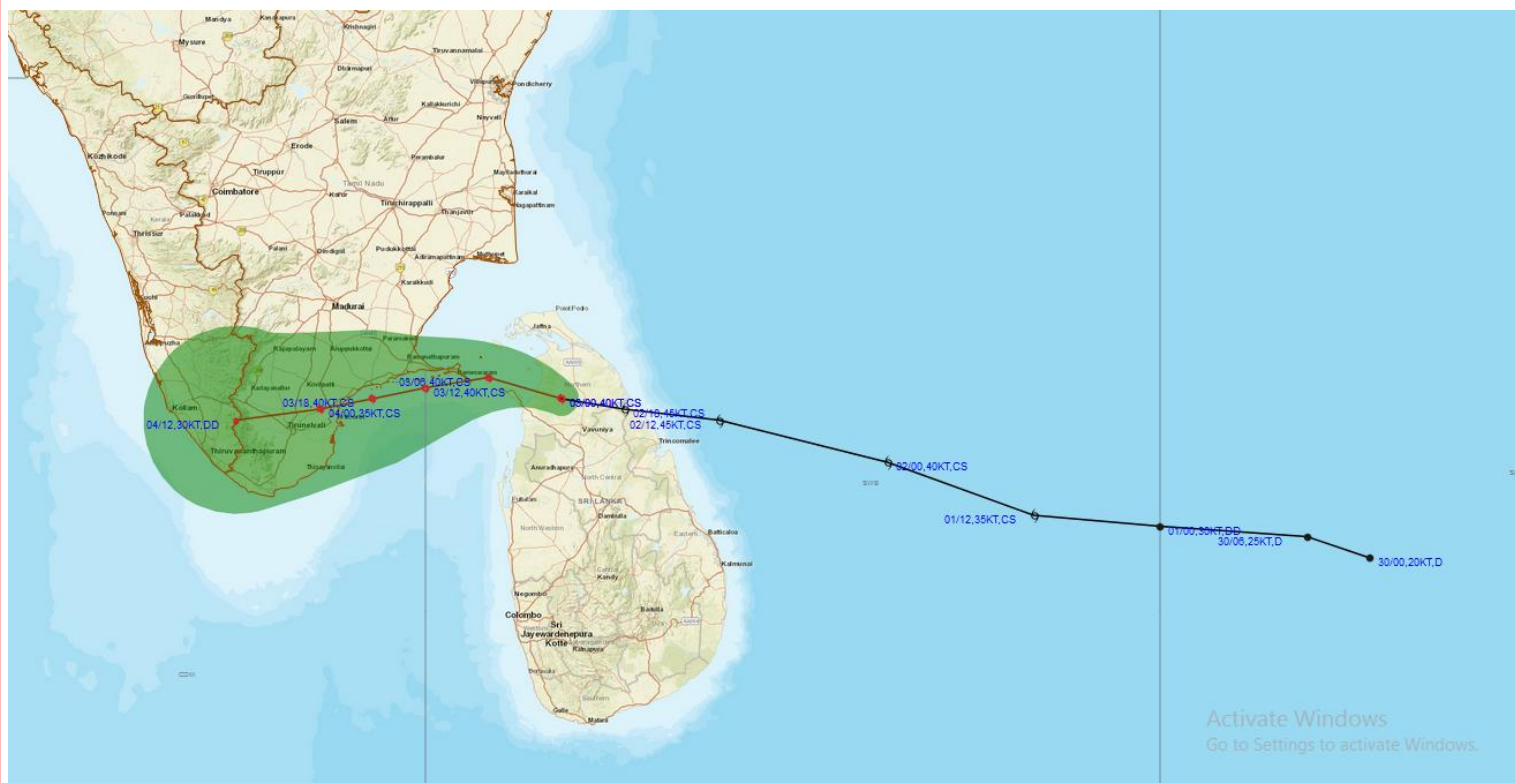


Spatial rainfall distribution: Isolated: ≤25%, A few: 26-50%, Many: 51-75%, Most: 76-100%

Rainfall amount (mm): Heavy rain: 64.5 – 115.5, Very heavy rain: 115.6 – 204.4, Extremely heavy rain: 204.5 or more.



OBSERVED AND FORECAST TRACK ALONGWITH CONE OF UNCERTAINTY OF CYCLONIC STORM "BUREVI" OVER SRI LANKA BASED ON 0000 UTC OF 3rd DECEMBER, 2020.



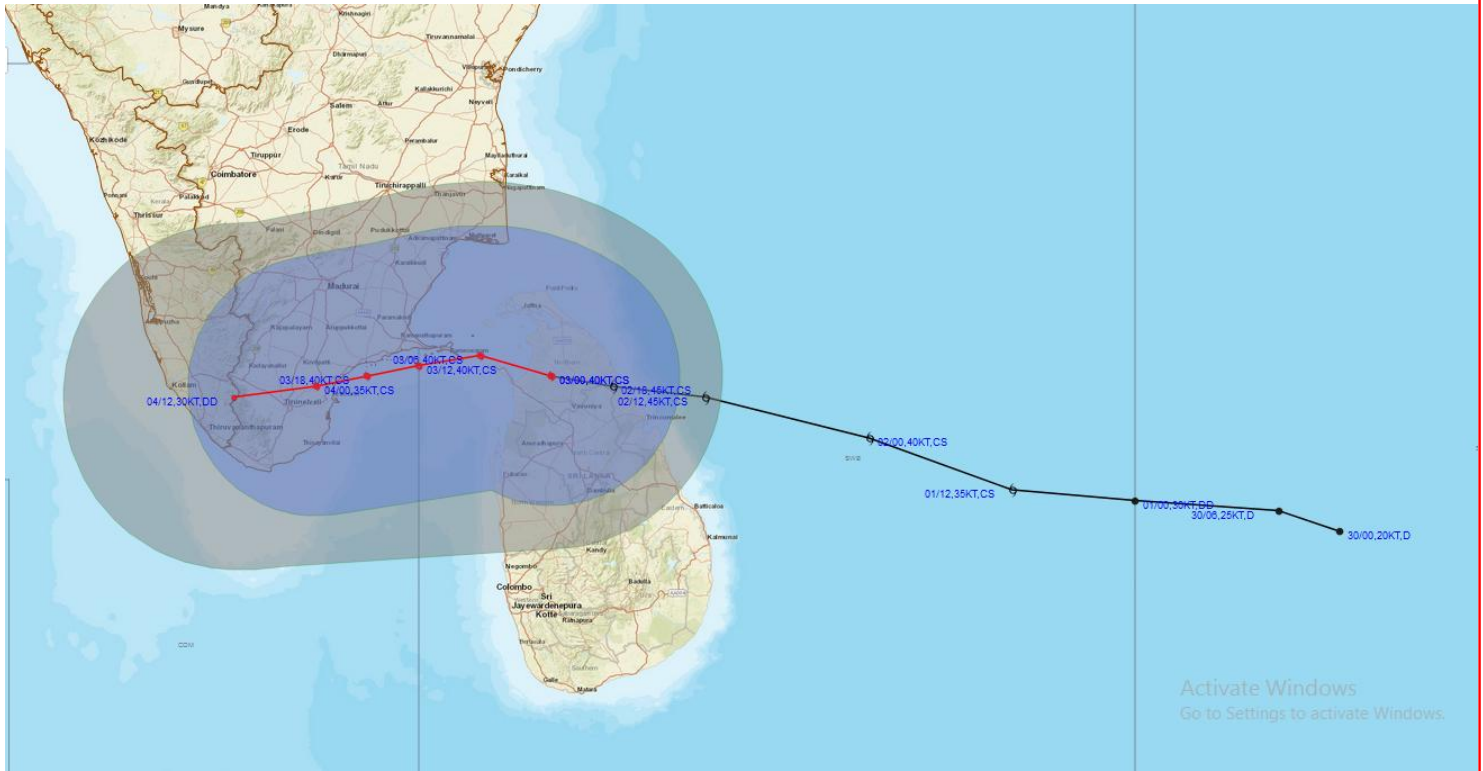
DATE/TIME IN UTC
 IST=UTC + 0530
 L: LOW PRESSURE AREA
 WML: WELL MARKED LOW PRESSURE AREA
 D: DEPRESSION (17-27 KT)
 DD: DEEP DEPRESSION (28-33 KT)
 CS: CYCLONIC STORM (34-47 KT)
 SCS: SEVERE CYCLONIC STORM (48-63KT)
 VSCS: VERY SEVERE CYCLONIC STORM (64-89 KT)
 ESCS: EXTREMELY SEVERE CYCLONIC STORM (90-119 KT)
 SuCS: SUPER CYCLONIC STORM (≥ 120 KT)

● LESS THAN 34 KT
 ⤵ 34-47 KT
 ⤵ ≥ 48 KT
 — OBSERVED TRACK
 — FORECAST TRACK
 ▲ CONE OF UNCERTAINTY

Spatial rainfall distribution: Isolated: $\leq 25\%$, A few: 26-50%, Many: 51-75%, Most: 76-100%
 Rainfall amount (mm): Heavy rain: 64.5 – 115.5, Very heavy rain: 115.6 – 204.4, Extremely heavy rain: 204.5 or more.



OBSERVED AND FORECAST TRACK ALONGWITH QUADRANT WIND DISTRIBUTION OF CYCLONIC STORM “BUREVI” OVER SRI LANKA BASED ON 0000 UTC OF 3rd DECEMBER, 2020.



DATE/TIME IN UTC
 IST=UTC + 0530
 L: LOW PRESSURE AREA
 WML: WELL MARKED LOW PRESSURE AREA
 D: DEPRESSION (17-27 KT)
 DD: DEEP DEPRESSION (28-33 KT)
 CS: CYCLONIC STORM (34-47 KT)
 SCS: SEVERE CYCLONIC STORM (48-63KT)
 VSCS: VERY SEVERE CYCLONIC STORM (64-89 KT)
 ESCS: EXTREMELY SEVERE CYCLONIC STORM (90-119 KT)
 SuCS: SUPER CYCLONIC STORM (≥ 120 KT)

- LESS THAN 34 KT
- 34-47 KT
- ≥ 48 KT
- OBSERVED TRACK
- FORECAST TRACK
- ▲ CONE OF UNCERTAINTY
- AREA OF MAXIMUM SUSTAINED WIND SPEED:
- 28-33 KT (52-61 KMPH)
- 34-49 KT (62-91 KMPH)
- 50-63 KT (92-117 KMPH)
- ≥ 64 KT (≥118 KMPH)

IMPACT OVER THE SEA

MSW (knot/kmph)	Impact	Action
28-33 (52-61)	Very rough seas	Total suspension of fishing operations
34-49 (62-91)	High to very high seas	Total suspension of fishing operations
50-63 (92-117)	Very high seas	Total suspension of fishing operations
≥ 64 (≥118)	Phenomenal	Total suspension of fishing operations

Spatial rainfall distribution: Isolated: ≤25%, A few: 26-50%, Many: 51-75%, Most: 76-100%

Rainfall amount (mm): Heavy rain: 64.5 – 115.5, Very heavy rain: 115.6 – 204.4, Extremely heavy rain: 204.5 or more.

Storm Surge Forecast by INCOIS Model based on 1800 UTC of 2nd December

STORM SURGE HEIGHT INFORMATION:

* The below listed surge heights are over and above astronomical tide.

MANDAL/TALUK	DISTRICT	STATE / UNION TERRITORY	NEAREST PLACE OF HABITATION	STORM SURGE (m)	EXPECTED INUNDATION EXTENT (km)
Tiruvadanai	Ramanathapuram	Tamil Nadu	Marungur	0.8-1.2	Upto 0.69
Ramanathapuram	Ramanathapuram	Tamil Nadu	Pathanendal	0.2-1.2	Upto 0.47
Arantangi	Pudukkottai	Tamil Nadu	Enadi	0.4-0.7	Upto 0.39
Peravurani	Thanjavur	Tamil Nadu	Sendalaivayal	0.6-0.6	Nil
Ottapidaram	Thoothukkudi	Tamil Nadu	Pattanamurudur	0.5-0.6	Upto 0.14
Pattukkottai	Thanjavur	Tamil Nadu	Palanjur	0.4-0.5	Upto 0.18
Tuticorin	Thoothukkudi	Tamil Nadu	Mappilaiurani	0.2-0.5	Upto 1.9
Vilattikulam	Thoothukkudi	Tamil Nadu	Vaippar	0.4-0.5	Nil

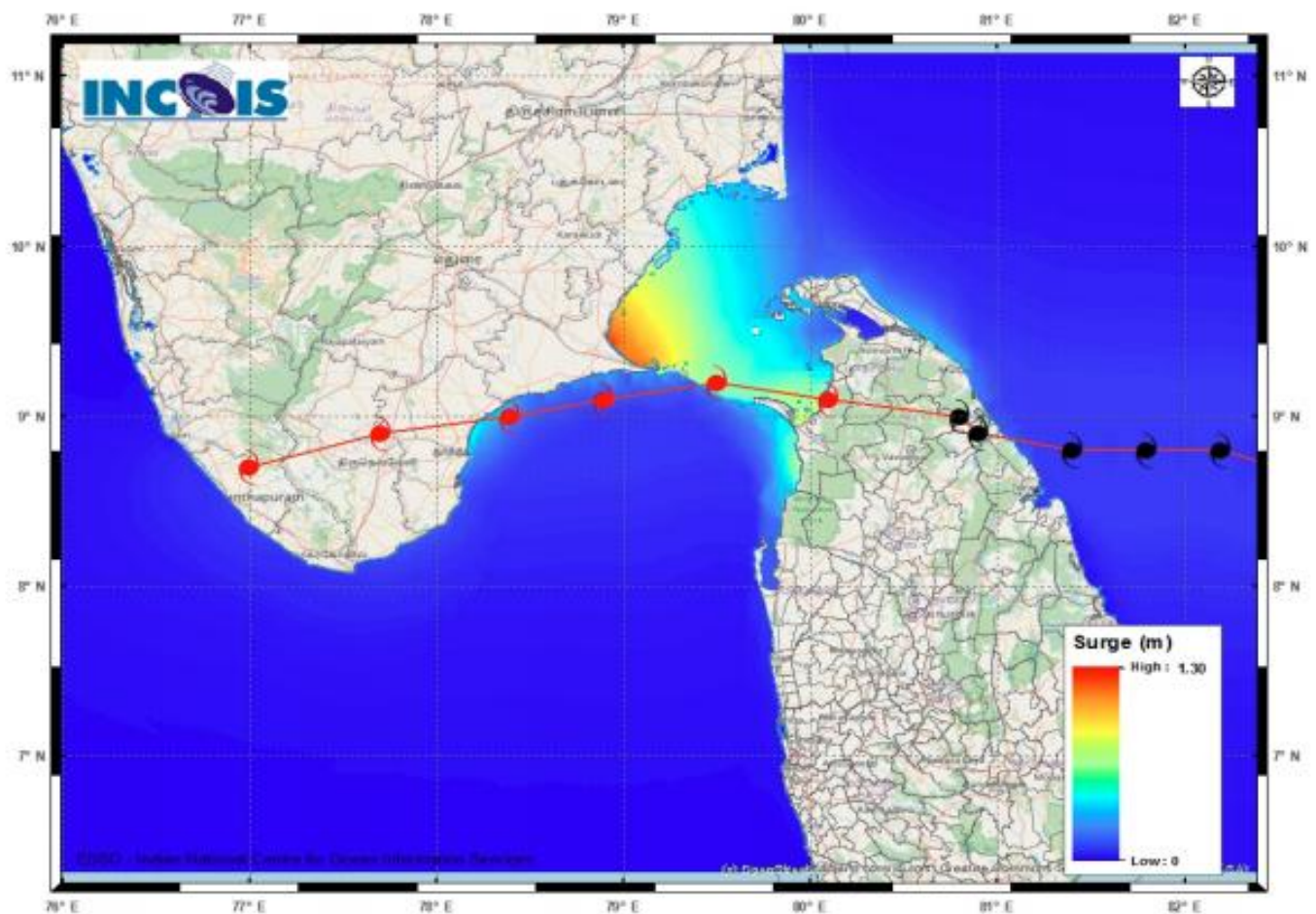


Figure: Storm Surge Map

Spatial rainfall distribution: Isolated: $\leq 25\%$, A few: 26-50%, Many: 51-75%, Most: 76-100%
 Rainfall amount (mm): Heavy rain: 64.5 – 115.5, Very heavy rain: 115.6 – 204.4, Extremely heavy rain: 204.5 or more.